

# AGENDA

**Meeting:** MELKSHAM AREA BOARD  
**Place:** Seend Community Centre, Rusty Lane, Seend, SN12 6NS  
**Date:** Wednesday 6 February 2013  
**Time:** 7.00 pm

---

Including the Parishes of Atworth, Broughton Gifford, Melksham, Melksham Without, Steeple Ashton, Bulkington, Keevil, Great Hinton, Poulshot, Semington and Seend

---

**The Area Board welcomes and invites contributions from members of the public. The chairman will try to ensure that everyone who wishes to speak will have the opportunity to do so.**

If you have any requirements that would make your attendance at the meeting easier, please contact your Democratic Services Officer.

**Refreshments and networking opportunities will be available from 6:30pm.**

---

Please direct any enquiries on this Agenda to Kevin Fielding (Democratic Services Officer), on 01249 7066102 or email [kevin.fielding@wiltshire.gov.uk](mailto:kevin.fielding@wiltshire.gov.uk) or Alison Sullivan (Melksham Community Area Manager), direct line 07917 721371 or (email) [alison.sullivan@wiltshire.gov.uk](mailto:alison.sullivan@wiltshire.gov.uk)

All the papers connected with this meeting are available on the Council's website at [www.wiltshire.gov.uk](http://www.wiltshire.gov.uk)

Press enquiries to Communications on direct lines (01225) 713114 / 713115.

---

## Wiltshire Councillors

Cllr Jonathon Seed, Summerham and Seend (Chairman)  
Cllr Rod Eaton, Melksham North (Vice Chairman)  
Cllr Mark Griffiths, Melksham Without North

Cllr Jon Hubbard, Melksham South  
Cllr Stephen Petty, Melksham Central  
Cllr Roy While, Melksham Without South

Items to be considered	Time
<p>1     <b>Chairman's Welcome, Introduction and Announcements</b></p> <ul style="list-style-type: none"> <li>• Melksham Community Campus.</li> </ul>	7.00pm
<p>2     <b>Apologies for Absence</b></p>	
<p>3     <b>Minutes</b> (<i>Pages 3 - 12</i>)</p> <p>To confirm the minutes of the meeting held on the 12 December 2012.</p>	
<p>4     <b>Declarations of Interest</b></p> <p>To receive any declarations of disclosable interests or dispensations granted by the Standards Committee.</p>	
<p>5     <b>Partner Updates</b> (<i>Pages 13 - 18</i>)</p> <p>To receive updates from any of the following partners:</p> <ul style="list-style-type: none"> <li>a. Melksham Youth Advisory Group (YAG)</li> <li>b. Community Area Partnership Representative</li> <li>c. Wiltshire Police</li> <li>d. Wiltshire Police &amp; Crime Commissioner</li> <li>e. Wiltshire Fire and Rescue Service</li> <li>f. NHS Wiltshire</li> <li>g. Melksham Town Council</li> <li>h. Parish Council Nominated Representatives</li> <li>i. Melksham Chambers of Commerce</li> <li>j. Shadow Community Area Campus (SCOB)</li> </ul>	
<p>6     <b>Proposals regarding King Georges Fields and various Leases to include Melksham Adventure Centre</b> (<i>Pages 19 - 24</i>)</p> <p>Donal Casey, (Senior Estates Officer, Wiltshire Council) to update the Area Board on proposals regarding King Georges Fields and various Leases to include Melksham Adventure Centre.</p>	7.30pm

7 **"Your Area Board" - how we've done and future projects** 7.40pm  
(Pages 25 - 28)

Cllr Jonathon Seed to introduce a short film featuring some of the achievements of the Melksham Area Board over past few years.

Attendees will be given the opportunity to discuss and prioritise future issues for consideration and to take part in an interactive debate and vote.

8 **Grants & Funding** (Pages 29 - 36) 8.30pm

To ask Councillors to consider three small grant applications, one councillor led initiative and two community area grant applications:

Small grant applications

- Bowerhill Toddler Group wish to apply for a grant of £350 to embrace different cultures.
- Melksham Community Area Partnership, Community Safety group, wish to apply for a small grant of £286 to provide slow down stickers.
- Atworth village hall committee wish to apply for a grant of £248 for specialised furniture for people with a disability

Councillor led initiative

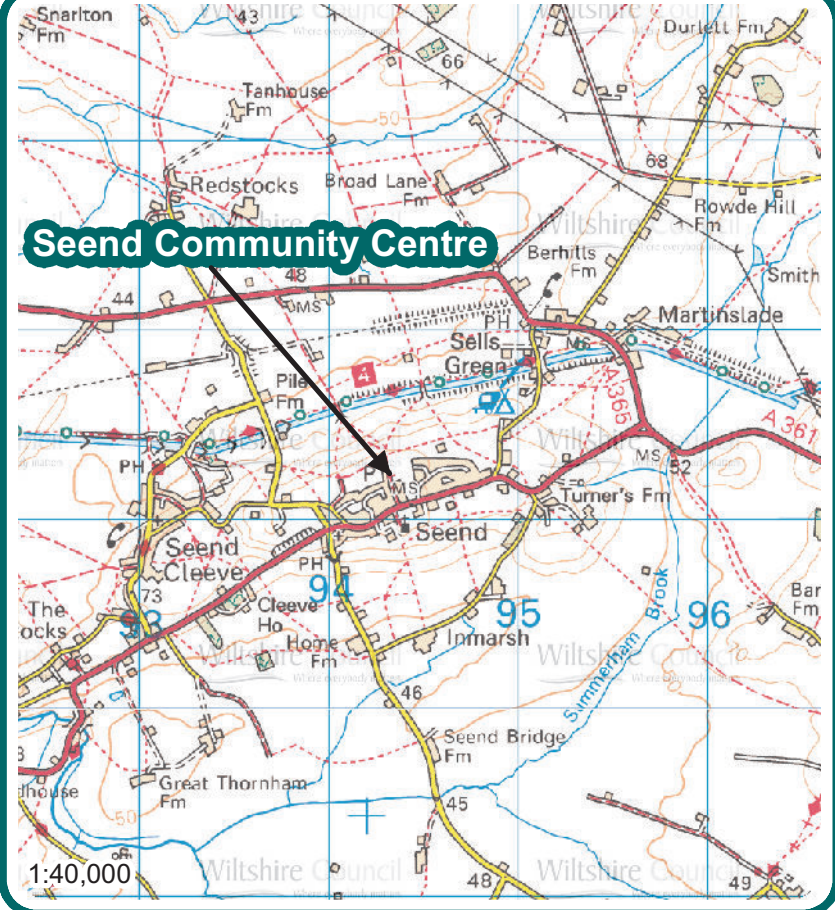
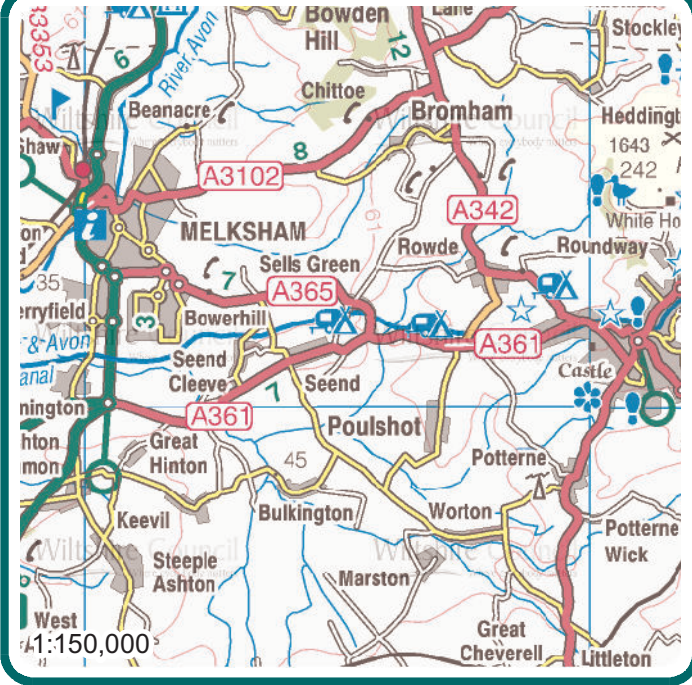
- Councillor Jon Hubbard seeks to support Queensway community with an event and seeks £500 towards that project.

Community Area Grants

- Wilts and Berks Canal Trust wish to apply for a grant of £2,832 to help restore the towpath.
- Melksham Forest Community Centre wish to apply for a grant of £3,841 to install sewer pumps in their community centre.

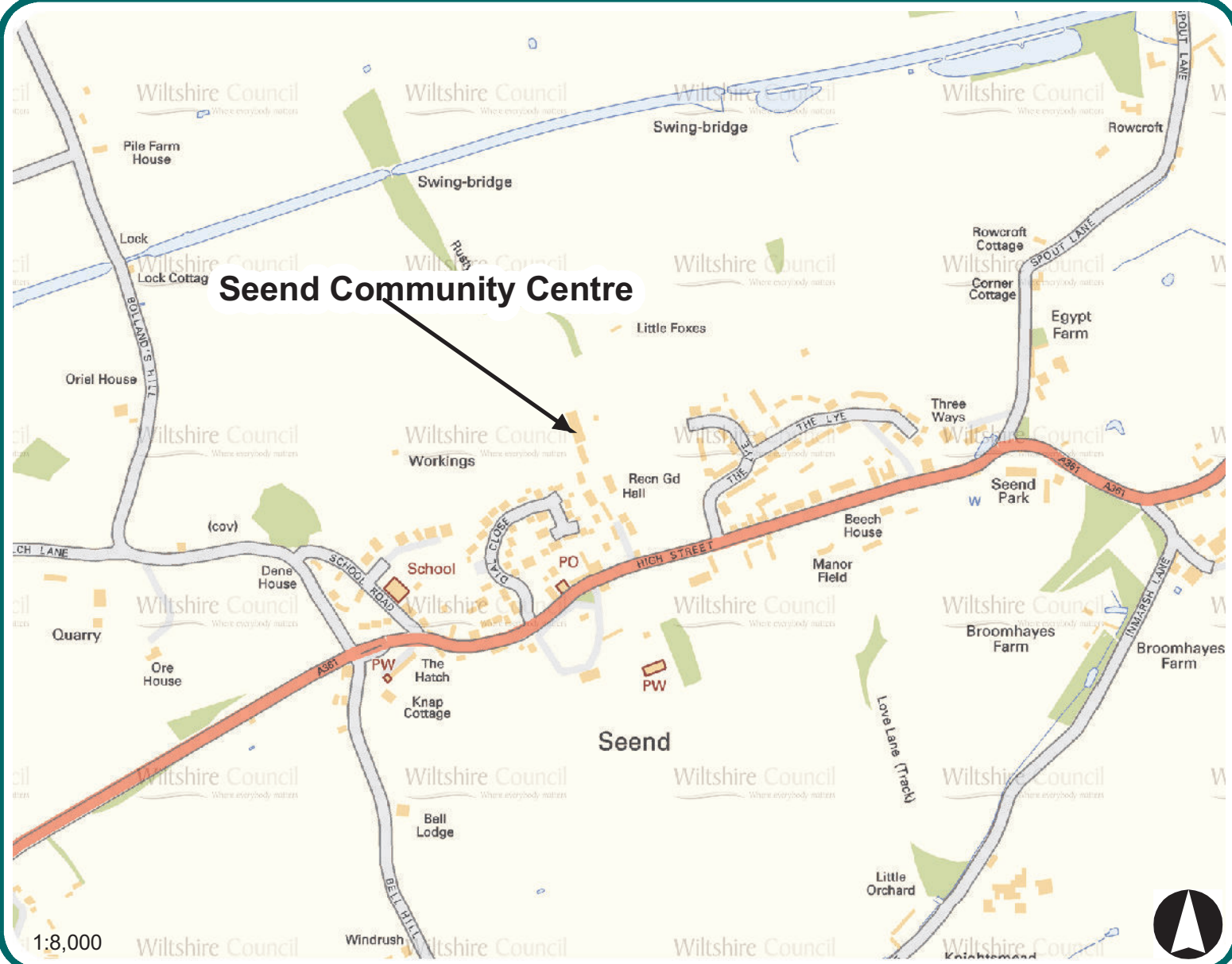
Update from Dawn Rossi - Atworth youth centre on the self defence course which was funded through the Community Area Grant Scheme.

9	<b>Community Area Transport Group (CAT-G) – update_</b> (Pages 37 - 40)	<b>8.55pm</b>
10	<b>Any Other Items of Public Concern</b>	
11	<b>Future Meeting Dates</b> <ul style="list-style-type: none"><li>• Wed 5 June – Melksham Assembly Hall.</li><li>• Wed 7 August – Broughton Gifford Village Hall.</li><li>• Wed 9 October – Melksham Assembly Hall.</li></ul>	
12	<b>Evaluation &amp; Close</b>	<b>9.00pm</b>



**Seend Community Centre**  
 Rusty Lane  
 Seend  
 Melksham  
 SN12 6NS


  
 Where everybody matters





# MINUTES

**Meeting:** MELKSHAM AREA BOARD  
**Place:** Melksham Town Hall, Melksham, SN12 6ES  
**Date:** 12 December 2012  
**Start Time:** 7:00pm  
**Finish Time:** 9:10pm

---

Please direct any enquiries on these minutes to:

Kevin Fielding (Democratic Services Officer), Tel: 01249 706612 or (e-mail) [kevin.fielding@wiltshire.gov.uk](mailto:kevin.fielding@wiltshire.gov.uk)

Papers available on the Council's website at [www.wiltshire.gov.uk](http://www.wiltshire.gov.uk)

---

## **In Attendance:**

### **Wiltshire Councillors**

Cllr Jonathon Seed (Chairman), Cllr Rod Eaton (Vice Chairman), Cllr Mark Griffiths, Cllr Jon Hubbard, Cllr Steve Petty, Cllr Roy While and Cllr Jane Scott OBE

### **Wiltshire Council Officers**

Alison Sullivan - Community Area Manager  
Kevin Fielding - Democratic Services Officer  
Niki Lewis – Service Director

### **Town and Parish Councils**

Melksham Town Council – Chris Petty  
Atworth Parish Council – Effie Gale-Sides  
Melksham Without Parish Council – Mike Mills & Rolph Brindle

### **Partners**

Wiltshire Police – Inspector Lisette Harvey  
Wiltshire Fire & Rescue Service – Mike Franklin  
Community Area Partnership – Colin Goodhind

**Total in attendance: 80**

---





<u>Agenda Item No.</u>	<u>Summary of Issues Discussed and Decision</u>
1	<p><u>Chairman's Welcome and Introduction</u></p> <p>The Chairman welcomed everyone to the Melksham Town Hall, and then introduced the Wiltshire councillors who made up the area board as well as Cllr Jane Scott OBE, Leader of Wiltshire Council who was in attendance.</p> <p>The Chairman was pleased to see that a good many young people were in attendance, these were winners at the recent "You Decide" youth event.</p>
2	<p><u>"You Decide" Event -Update</u></p> <p>Cllr John Hubbard introduced a short film which highlighted the success and positive feedback that was received from the Youth Budgeting event that had been held at the Assembly Hall on the 14 November 2012.</p> <p>It was agreed that the event had been very inspiring, with all eight presentations being well received and obtaining grant funding from the Melksham Area Board.</p> <p>Cllr Hubbard paid tribute to the staff at Extended Services, especially Becky Hatfield for the administrative support that she had provided to make the event such a success.</p> <p>The Area Board was thanked for granting the funding to make the presentations become reality, as was the Town Council and local businesses who had backed the event.</p> <p>The Chairman thanked the young people in attendance, along with Cllr Jon Hubbard for arranging and hosting such a great evening.</p>
3	<p><u>Chairman's Announcements</u></p> <p>The following announcements contained in the pack and tabled on the night were mentioned briefly:</p> <ul style="list-style-type: none"> <li>• Community Infrastructure Levy (CIL).</li> <li>• Welfare Reforms film.</li> <li>• Wilts &amp; Berks Canal update – Ken Oliver, Canal Officer, Wiltshire Council was in attendance to answer any questions.</li> </ul>

4	<p><u>Apologies for Absence</u></p> <p>Apologies were received from Paul Wiltshire – Broughton Gifford Parish Council and Phil McMullen – Melksham Community Area Partnership.</p>
5	<p><u>Minutes</u></p> <p><b>Decision</b></p> <ul style="list-style-type: none"> <li>• <b>The minutes of the 10 October 2012 meeting were agreed as a correct record and signed by the Chairman.</b></li> </ul>
6	<p><u>Declarations of Interest</u></p> <p>Agenda Item No.11 - Grant application from Melksham &amp; District Guides. Cllr Steve Petty, Chairman of Melksham Lions Club who are supporters of Melksham &amp; District Guides.</p> <p>Agenda Item No11 – Councillor led grant initiative. Cllr Jon Hubbard who is the Chairman of Extended Services, Melksham.</p>
7	<p><u>Partner Updates</u></p> <p>The following Partner updates were noted:</p> <p>Melksham Youth Advisory Group (YAG) – Carl Haughton</p> <p>Points made included:</p> <ul style="list-style-type: none"> <li>• YAG were now visiting local Primary Schools showing their “Don’t Litter” video.</li> <li>• YAG had received funding at Youth Budgeting event to make a film about Mental Health, which it would show to local Secondary Schools.</li> <li>• YAG were looking to arrange a meeting with the new Police &amp; Crime Commissioner to see where and how young people fitted into his plans.</li> </ul> <p>Community Area Partnership Representative – Colin Goodhind</p> <p>Points made included:</p> <ul style="list-style-type: none"> <li>• MCAP had facilitated a meeting with Water Action Group, which highlighted the Wilts &amp; Berks, Melksham canal link and where Melksham fits into the national canal picture.</li> </ul>

- MCAP looking for any feedback on the proposed Melksham canal link, feedback received so far had been positive.
- Enhanced Melksham Town Centre CCTV – MCAP were putting together a survey to decide where the new cameras should be sited.
- Were continuing to feed into the SCOB process
- Were working with two other Area Partnerships to try and improve local bus services.
- MCAP had taken a stand at the recent Melksham Food & Drink Festival.

Wiltshire Police – Inspector Lisette Harvey

- The written report contained in the agenda pack was noted, with reference to domestic burglaries from houses and sheds over the Christmas period.

Wiltshire Fire and Rescue Service – Mike Franklin

- The written report contained in the agenda pack was noted, with reference to the importance of users of open fires fitting carbon monoxide alarms.

NHS Wiltshire

- The written report contained in the agenda pack was noted.

Melksham Town Council – Chris Petty

- Nothing to report.

Parish Council Nominated Representatives

- Nothing to report.

Melksham Chambers of Commerce

- Not present at the meeting.

	<p>Shadow Community Operations Board (SCOB) – Cllr Roy While</p> <p>Points made included:</p> <ul style="list-style-type: none"> <li>• Very encouraged by the attendance at the last Area Board where the Campus was discussed, over two hundred local people turned out to this event.</li> <li>• The SCOB were now meeting with officers from Wiltshire Council to decide how the tender process would be carried out to appoint the campus architects.</li> <li>• SCOB were still keen to talk with any local parties about the SCOB plans.</li> <li>• Archaeological surveys were planned for the campus site in the near future.</li> </ul> <p>The Chairman thanked everybody for their updates.</p>
8	<p><u>Understanding Autism</u></p> <p>Maria Cattelona – Disabilities Commissioning Officer, Wiltshire Council and Polly Harrison – Wilts Parent Carer Council gave a presentation that looked to promote more understanding and acceptance about the nature of autism in the local area: improved recognition, awareness and minor adjustments in the community would (alone), contribute significantly.</p> <p>A paper on “Understanding Autism” was tabled at the meeting.</p> <p>The Chairman thanked Maria Cattelona and Polly Harrison for an illuminating presentation.</p>
9	<p><u>The Legacy of 2012</u></p> <p>Councillor Jane Scott, Leader, Wiltshire Council &amp; Laurie Bell, Director of Communications, Wiltshire Council gave a presentation that recapped the Summer celebrations for the Jubilee and the Olympics, and discussed the effect the year of celebration had had on the community and how to carry on the legacy through 2013 and beyond.</p> <p>Points covered included:</p> <p>Key Events</p> <ul style="list-style-type: none"> <li>• Queen’s Diamond Jubilee – 1 May.</li> </ul>

- Olympic Torch Relay – 22 & 23 May inc lunchtime stop at Clarendon College, Trowbridge.
- Olympic Torch Relay – 11 & 12 July.
- Festival of Celebration – 11 July, Hudson’s Field.
- Michael Johnson – 12 July, Stonehenge and Salisbury Cathedral.

#### The Impact – community

- Over 225,000 people attended the events – half the population of Wiltshire.
- Hundreds of street parties, events, concerts and activities held across county.
- Atmosphere of celebration.
- Reason to bring communities together.

#### The Impact – economy

- Additional spend on events days est. over £1 million – not including tourism impact.
- Hotels and B & B’s in Salisbury fully booked w/c 9 July.
- Visit Wiltshire website highest monthly number of visits since records began in 2008.
- Substantial return on investment (£290,000).

#### The Impact – publicity

- Queen’s Diamond Jubilee event – local, regional, national and international – advertising value £191,000 – circulation 100 million.
- Olympic torch and Hudson’s Field so far... local, regional, national and international – advertising value £890,000 – circulation of 250 million +.
- Footage of Stonehenge and Michael Johnson coverage – advertising value £2.7million – circulation 50 million + per day.

	<ul style="list-style-type: none"> <li>• Wiltshire may become host for part of the 2017, Tour de France Cycle race.</li> </ul> <p>The Impact – culture</p> <ul style="list-style-type: none"> <li>• Biggest partnership event.</li> <li>• Robust resilience – keeping the county safe.</li> <li>• Close working with area boards and town and parish councils.</li> <li>• Great team building – over 1,000 Wiltshire Council staff worked the events.</li> <li>• Many people took on different roles and expanded their skills and experience.</li> <li>• Lasting relationships formed...</li> </ul> <p>The Impact – legacy</p> <ul style="list-style-type: none"> <li>• Need to build on the success of this year.</li> <li>• Setting up a Legacy Board.</li> <li>• Focus on; <ul style="list-style-type: none"> <li>– Health and sport for all – free swimming.</li> <li>– The economy – series of business events and promotions.</li> <li>– Communities – an annual event or activity in every area?</li> <li>– Working in partnership to deliver more.</li> </ul> </li> </ul> <p>The Chairman thanked Cllr Scott and Laurie Bell for their presentation.</p>
10	<p><u>Cabinet Member Questions - Cllr Jane Scott OBE</u></p> <p>The Chairman then opened the floor for questions for Cllr Scott.</p> <p>Questions raised from the floor included:</p> <ul style="list-style-type: none"> <li>• Could Wiltshire monuments such as Stonehenge and Silbury Hill be made more open to visitors? <i>a. Yes, Cllr Scott would discuss this with Wiltshire Heritage.</i></li> </ul> <p>The Chairman thanked Cllr Scott taking the question and attending the Area Board.</p>

11	<p><u>Any Other Items of Public Concern</u></p> <p>Ken Spencer – Atworth Transport Action Group had concerns that issues raised on the Area Board website issues system were being closed before they had been actioned. Mr Spencer felt that the person who had raised the issue should be notified before the issue was closed, or that the issuer should close it when they were satisfied that any actions had been carried out.</p> <p>The Chairman advised that this would be looked into at a future CAT-G meeting.</p> <p>Delays in implementing Community Speedwatch in the Snowberry Lane area of Melksham.</p> <p>The Chairman advised that he would follow this up.</p>
12	<p><u>Grants and Funding</u></p> <p>Councillors were asked to consider two Community Area Grant applications.</p> <p><b>Decision</b>  <b>Melksham &amp; District guides were awarded £1,000 for improvements to the Guide HQ .</b></p> <p><b>Reason</b>  <i>The application demonstrates a link to the Community Plan; provide recreational activities for young people.</i></p> <p><b>Decision</b>  <b>Melksham Scout Group were awarded £1,000 to replace the broken sewage drains and make more accessible the outside space at the Scout Hut.</b></p> <p><b>Reason</b>  <i>The application demonstrates a link to the Community Plan; provide recreational activities for young people.</i></p> <p>Councillors were asked to consider two small grant applications.</p> <p><b>Decision</b>  <b>Keevil Village Hall Management Committee were awarded £210 towards the purchase of a projector screen.</b></p> <p><b>Reason</b>  <i>The application demonstrates a link to the Community Plan: supporting adults and young people.</i></p> <p><b>Decision</b>  <b>Steeple Ashton Christmas lights group were £350 towards the cost of the village Christmas tree lights and decorations.</b></p>

	<p><b>Reason</b>  <i>This project will enable the community to get together and gather for events around the Christmas tree in the local village. This project will provide a focus for the village, young people and older people and help to keep the community spirit-that was demonstrated during the diamond jubilee, alive.</i></p> <p>Councillors were asked to consider one councillor led initiative.</p> <p><b>Decision</b>  Councillor Jon Hubbard on behalf of Extended Services were awarded £4,976 to run a participatory budgeting event for young people in Melksham who will be able to bid for funding for projects and a street based youth worker.</p> <p><b>Reason</b>  <i>This project will enable extended services to run another successful event on behalf of the Area Board for young people. The young people will put forward their plans for projects in their own locality and bid on them within a participatory budgeting format and also for the continuation of street based youth work.</i></p> <p>Councillors were asked to consider the second tranche of funding for the Community Partnership.</p> <p><b>Decision</b>  The Community Area Partnership were awarded £4,999 for the second tranche of funding to continue their work on the community plan on behalf of the area board.</p>
13	<p><u>Future Meeting Dates</u></p> <p>6 February 2013, Seend Community Centre.</p>
14	<p><u>Evaluation and Close</u></p> <p>The Chairman thanked everyone for attending and wished them a merry Christmas and a happy New Year.</p>





## **Melksham Area Board February 2013**

### **1. Neighbourhood Policing**

#### **Current NPT Priorities:**

Up-to-date details of the current news about Neighbourhood Policing Teams (NPTs), including profiles, priorities and forthcoming community consultation events can be found on the Wiltshire Police website [www.wiltshire.police.uk](http://www.wiltshire.police.uk)

#### **Team News:**

PS Sean Brady is now very settled into the NPT in Melksham and are doing some stirring work in developing the team and forging local relationships with the community and partners.

The team that Sean manages includes:

Town Centre Team: Beat Manager – PC Kane Fulbrook-Smith with PCSO Helen Wilson & PCSO Christopher Pugh

Rural North Team: Beat Manager – PC Barry Dalton with PCSO Janet Gould & PCSO Maggie Ledbury

Rural South Team: Beat Manager – PC Emily Thomas & PCSO Rose Baldock

## 2. Crime Priorities

As reported at previous meetings and highlighted in the table at the end of this report, the crimes that have caused the majority of issues within the Melksham area have been burglary (sheds & garages), vehicle crime and violence (the majority of which is committed between those who know each other).

The NPT has worked tirelessly to disrupt people suspected of committing crime and those they associate with. Warrants have been executed and reported on through the local press.

This activity has led to a reduction in crimes however there is no room for complacency and we will continue our work to ensure Melksham is a safe place to live and visit.

In 2013 the NPT will continue disrupting people who commit crime. This will include more warrants and operations with partner agencies where appropriate. Key events will be published in the local press to improve communication from the police.

The aim is to reduce criminal activity in the last quarter of the financial year with a view to demonstrating Wiltshire Police's commitment to the community it serves.

**Lisette Harvey**  
**Sector Commander**  
**23 January 2013**

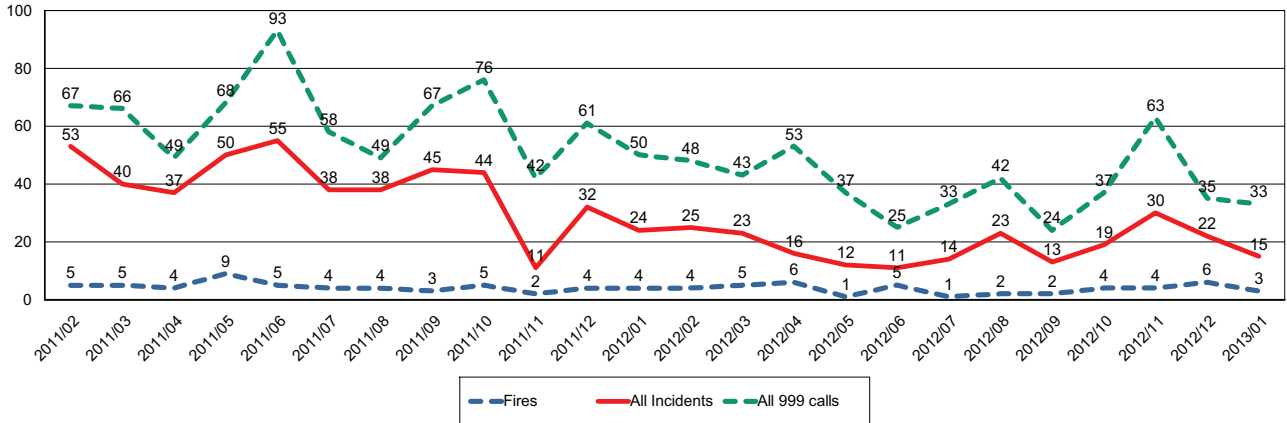
<b>ED Melksham</b>	<b>Crime</b>			
	December 2010 - November 2011	December 2011 - November 2012	Volume Change	% Change
Victim Based Crime	1029	1191	162	16%
Domestic Burglary	34	49	15	44%
Non Domestic Burglary	91	135	44	48%
Vehicle Crime	95	136	41	43%
Criminal Damage & Arson	221	260	39	18%
Violence Against The Person	210	235	25	12%
ASB Incidents (Year to Date)	778	618	-160	-21%



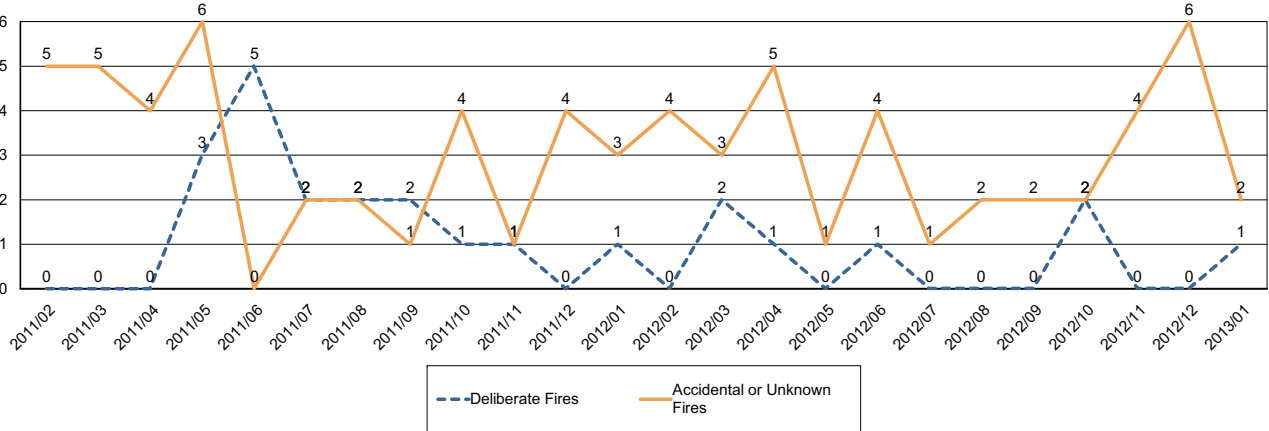
## Report for Melksham Area Board

The following is an update of Fire and Rescue Service activity up to and including January. It has been prepared using the latest information and is subject to change.

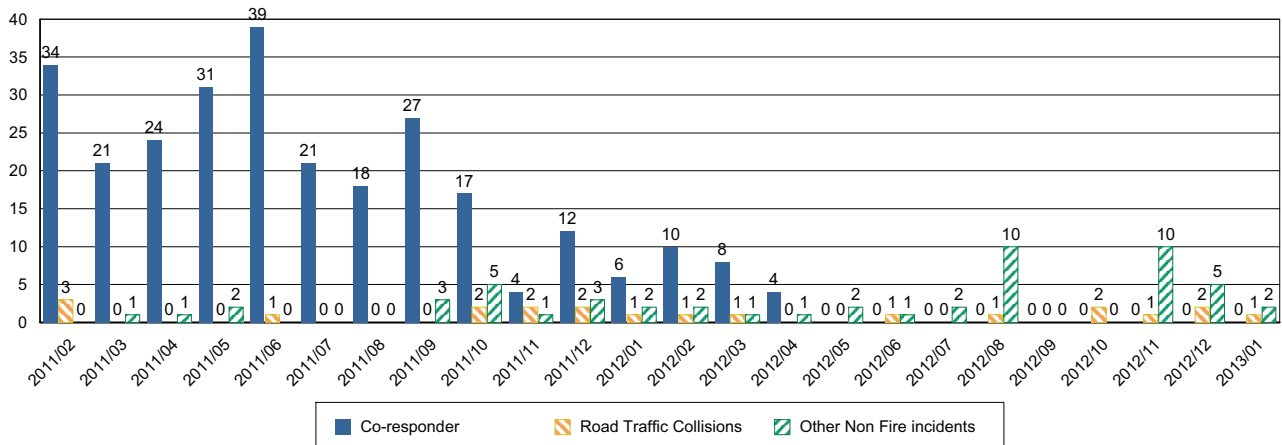
### Incidents and Calls



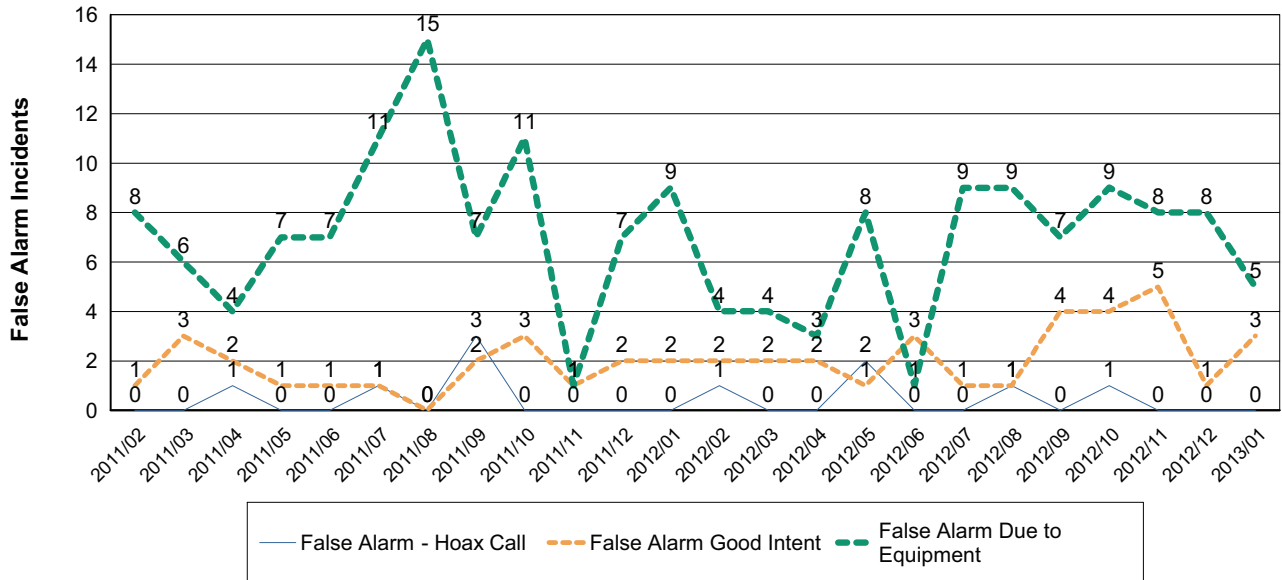
### Fires by Cause



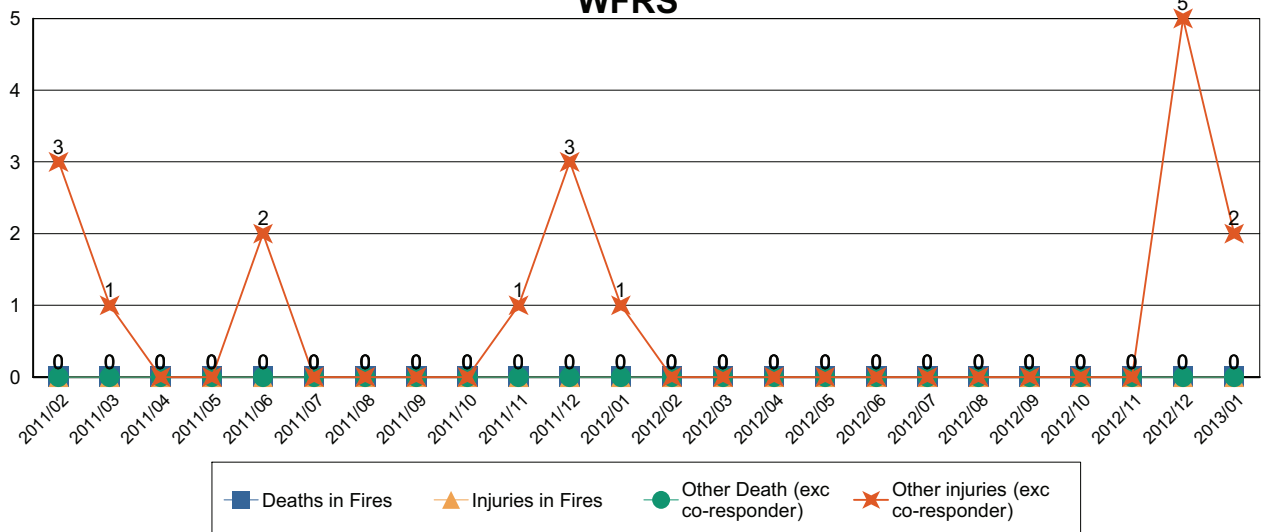
### Non-Fire incidents attended by WFRS



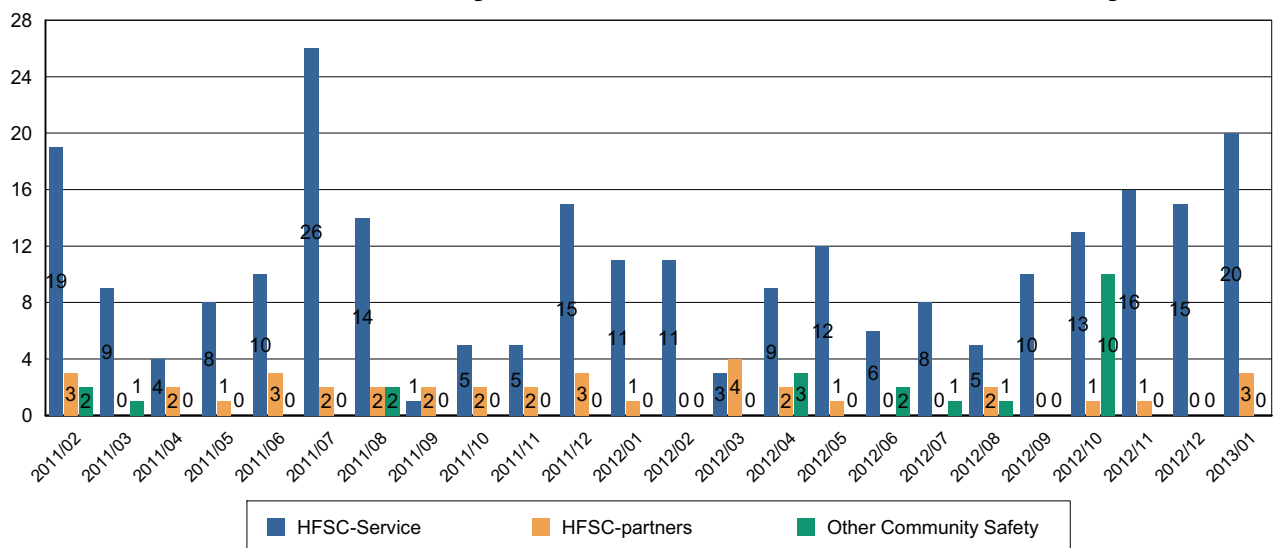
### Number of False Alarm Incidents



### Death & Injuries in incidents attended by WFRS



### Home Fire Safety Checks and other domestic safety



Comments and Interventions overleaf

## February update 2013

### Keep warm and well

With the recent heavy snowfall and icy conditions, NHS Wiltshire is urging people to keep warm and well this winter:

“The cold can have serious consequences, increasing the risk of strokes and heart attacks as well as colds and flu,” says Medical Director Steve Rowlands “Wrapping up warm, keeping the heating turned up and keeping a well-stocked medical cabinet incase you do catch a cold or flu are all sensible steps to take.”

“It’s particularly important to stay indoors during very cold weather if you have a respiratory illness – and all elderly people should avoid going out on icy pavements. This means staying at home until later in the morning when the ice has melted. Even if you have a doctor’s appointment first thing, try and reschedule it for later – your surgery will usually be happy to help with this. It’s better to wait than risk falling on the ice.”

NHS Wiltshire has produced five top tips on staying warm and well this winter.

1. **Keep your home warm** – set your central heating to between 65 and 70 degrees Fahrenheit (18-21 degrees centigrade). Heat the room you sit in during the day to 70 degrees, and your bedroom to 65 degrees. When it’s very cold (as it is at present), set the heating to come on earlier so that you’re not waiting for your home to warm up.
2. **Have your flu jab.** Everyone over 65, or with a wide variety of health conditions, is entitled to one free of charge. Immunity takes effect almost immediately, so even though a flu outbreak is currently well underway, you can still protect yourself by getting the jab – just call your GP to make an appointment.
3. **If you do fall ill with flu, it’s best to stay at home.** Flu is caused by a virus, and cannot be treated with antibiotics – so a visit to your GP is not necessarily the best course of action.
4. **Vomiting and diarrhoea bugs** caused by norovirus are common and very infectious. This can be a very unpleasant condition, but the best advice is to stay at home and drink plenty of fluids until the symptoms pass. Norovirus is highly infectious, with an incubation period of between one and three days. For that reason, you should wait 48 hours after symptoms have stopped before going back to work or school.
5. **Keep a well-stocked medicine cabinet**, with supplies of ibuprofen, paracetamol and your favourite cold remedy at hand.

### Where to go when you’re ill

The following points should be helpful when deciding who to contact.

- Pharmacies offer over-the-counter medicines and advice. As well as being open during regular retail hours, they operate an out-of-hours service on a rota basis;
- Call NHS Direct for advice on 0845 46 47 or go to [www.nhsdirect.nhs.uk](http://www.nhsdirect.nhs.uk). They can give a wide range of advice and information about many conditions;

- Use the minor injuries units at Chippenham and Trowbridge for cuts, burns and other injuries – but not for colds, flu or vomiting;
- Make an appointment with your own GP - an out-of-hours service is also available;
- If it is a genuine emergency, go to your local A&E department or call 999 for an ambulance.

### **Local campaign to increase teenage booster uptake**

As you may know tetanus, diphtheria and polio vaccination is given to young people aged between 13 and 18 as part of the school leavers booster. Locally the vaccine is offered to Year 10 pupils attending Council maintained schools by school nurses. Children attending independent schools are normally vaccinated through their GP practice. Across Wiltshire coverage rates of slightly over 95% have been achieved, which is in line with national averages. However, uptake figures vary significantly between individual GP practices ranging from 76% to 100%. Furthermore there has been little improvement in uptake over recent years. In response to this the Wiltshire Public Health Department have embarked on a campaign to:

- Raise the awareness among both recipients - the teenagers themselves - and their parents;
- the general public and
- local clinicians.

The campaign has been developed in partnership with young people and involves texting, posters and signposting to pertinent websites including Sparksite and the Healthy Schools websites.

The campaign began on the 7th January 2013 for about three months, with around 14,500 texts going out to teenagers on 15th January 2013. A press release will also go out after this date and posters will be displayed in local libraries and schools throughout January, February and March. It is envisaged that the campaign will be evaluated mid 2013.

The next PCT Board Meeting will be held on **Thursday 27 February** – venue to TBC – please refer to the NHS Wiltshire website: [www.wiltshire.nhs.uk](http://www.wiltshire.nhs.uk)  
 Members of the public are welcome to attend. Papers are published a week before the meeting on or on request from Stacey Saunders, NHS Wiltshire, email: [stacey.saunders@wiltshire.nhs.uk](mailto:stacey.saunders@wiltshire.nhs.uk)  
[www.wiltshire.nhs.uk](http://www.wiltshire.nhs.uk)

Melksham Area Board

Date 6 February 2013

---

**Grant of Lease**

**Melksham Adventure Centre**

**Executive Summary**

This report deals with an application for the grant of a new lease to Melksham Adventure Centre. Whilst not directly related, the report makes reference to Wiltshire Council's Community Asset Transfer Policy.

**Proposal**

The Area Board is asked to consider an application submitted by Melksham Adventure Centre for a renewed lease at a peppercorn rent.

**Reasons For Proposal**

In other circumstances a proposal supporting and implementing Wiltshire Council's Community Asset Transfer Policy would be made.

**Recommendation**

To approve a new lease for a term of 15 years at a peppercorn subject to the matters referred to in paragraph 10 of the report.

Donal Casey  
Senior surveyor

Melksham Area Board

Date 6 February 2013

---

**GRANT OF NEW LEASE – CONSIDERATION OF COMMUNITY ASSET  
TRANSFER POLICY**

**Melksham Adventure Centre**

**Purpose of Report**

1. The Area Board is asked to consider an application submitted by Melksham Adventure Centre located at King Georges Fields Melksham for a renewed lease of land (see plan attached at Appendix 1). To consider other users of the King Georges Fields and applications that may come forward in due course.

**Background**

2. Wiltshire Council is supporting the principle of the transfer of community assets in order to empower and strengthen local communities. The Council believes that transferring appropriate public assets to communities leads to more responsive services that better meet local people's priorities.
3. Transfer of an asset can also provide the opportunity to lever more resources into a community and provide a more accessible and responsive base from which to deliver local services.
4. A community group or organisation can benefit from greater financial stability and build confidence through having ownership (or long term security through a lease) of a physical asset. This financial sustainability can help the organisation become less dependent on grants, provide security for further borrowing and opportunities for further growth.
5. Typically, organisations that would be considered appropriate are Voluntary and Community Groups/Associations, Town or Parish Councils, Trusts or Charities, or Social Enterprise Groups.

**The application before the Area Board**

- 6 The King Georges Field Melksham is held on Trust by Wiltshire Council and several leases have been granted.(Appendix2) Under the Trust the Council is meant to obtain best consideration for any dispositions. However, as the Council subsidises the service any receipts from users would simply go towards reducing the Councils maintenance liability for the Fields.



- 7 In law the Council has to offer a renewed lease of up to 15 years to the Adventure Centre.
- 8 Otherwise the proposal meets the requirements for consideration by the Area Board. The Community Area Manager has consulted with Strategic Property Services, who have undertaken appropriate consultation with service departments across the Council. Consultation has been undertaken with members of the board. As this is a lease renewal public consultation has not taken place with simply the question as to rent being put before the board.

### **The views of Council officers**

- 10 On behalf of the Council, Strategic Property Services (who have overall responsibility for the Council's estates and property) has provided the following observations to the Area Board.
  - 10.1 The Adventure Centre property was leased to Melksham Adventure Centre for years from 1 November 1976 which expired 31 October 2011. They hold over on the existing terms and conditions and enjoy a protected tenancy.
  - 10.2 As in other circumstances the Council would be minded to consider favourably an application for a community asset transfer of this site. It is considered by officers that to charge a rent would be against the spirit of the Community Asset Transfer policy – that as near as reasonably possible the policy should apply.
  - 10.3 The properties are not to be transferred on the standard basis. Rather a lease for 15 years is to be granted at a peppercorn rent.
  - 10.4 The Adventure Centre hold the property under a full repairing lease and will bear the cost of putting and keeping the Adventure Centre in repair and carry on with its maintenance and improvement. Therefore, financial implications will be the loss of rent towards the maintenance of the King Georges Fields generally to the Councils maintenance budget.
  - 10.5 The Guides and Scouts buildings are considered to have similar issues attached and whereas the users have not been approached it would seem sensible to deal with these in the similar manner in due course.
  - 10.6 Other users of the site are not considered to be in the same light as these primarily youth groups and should be dealt with on their own merits in the fullness of time.
  - 10.7 The Adventure Centre sub-lets the property to users. As well as accounts held by the Adventure Centre, it would seem prudent to take accounts for these users of the centre to ensure that a supernormal profit is not being taken and that the benefit of the peppercorn rent goes to the young

people who are accessing the service and for whom this recommendation is being made.

- 10.8 If the members do not wish to grant a peppercorn for the whole period the renewed lease could reasonably incorporate rent reviews at 5 yearly intervals to revisit the question.

### **Recommendation**

**To approve a new lease at a peppercorn rent for a term of 15 years without review.**

Donal Casey  
Senior Surveyor

Appendix 1 Plan  
Appendix 2 Schedule of Leases

- a Melksham Adventure Centre 35 years. Expires 31/10/2011
  - b Melksham Guides 21 years. Expires 24/12/2005
  - c Melksham Scouts. Expires 24/12/2005
  - d Melksham Riverside Club 99 years. Expires 17/6/2068
  - e Melksham Cricket Club TBC
-





## Melksham Community Area



Cllr Jon Seed – Chairman

### **Working for the Community**

Since 2009, local people have submitted 264 issues to the Area Board for action.

223 of these have been resolved and 41 are under active consideration at the time of going to press.

### **Working with People who have experienced Stroke**

The Melksham Area Board has been working with the Stroke Association to develop a Voices project with a focus on people who have experienced a stroke. The project sets out to capture the views and voices of people who either do not or cannot participate in civic life. The project started in the Summer of 2011 with a stakeholder event that brought together agencies working with people who have experienced a stroke. There followed a series of workshops and activities with people from all over Wiltshire that culminated in the Life after stroke film produced by BAFTA Award winning film makers True Vision.

So far the film has been shown to a series of groups who have developed an action plan, both for themselves and for the organisations that work with stroke survivors and their carers. One of the most important outcomes that the groups identified is to share their experiences with others who have newly been affected by these issues. They identify common difficulties, such as problems with speaking, walking and getting around, transport, returning to work, finances and relationships. More importantly, the film demonstrates the many strengths and positive messages for practitioners and those new to strokes.



Consultation at Melksham Food Festival

### **Focusing on priorities**

During the Autumn 2011 and also in 2009, the Area Board and the Community Area partnership ran a Community Conference that attracted people from all walks of life. They spent the evening discussing the Joint Strategic Assessment for the area and identifying key priorities. ....Safe cycling, young people and alcohol, building capacity in volunteers, empty housing and rural social housing allocation, creating tourism in Melksham, making better use of the community bus, celebrating the excellent education in Melksham and linking the canal to safe routes to work and school

Melksham Area Board also piloted a Community Budgeting event “More information: More Influence” and developed an action plan focusing upon- reducing anti social behaviour-encouraging more responsible dog ownership-and improving the street scene.

These locally set priorities, together with the Melksham Community Plan provide the focus for local working groups, developing projects to address the local priorities.

### **Grant funding**

Many of the working groups are supported by funding from the Area Board to support their work, such as providing bags in the park to support responsible dog ownership and street based youth services.

Over 40 community groups have been supported by the Area Board over the last 4 years with over £120,000 awarded in sums ranging from £200 to £5,000. From Alzheimers Support to Wilts and Berks Canal Trust, the grants have enabled the community to work together towards locally agreed priorities, providing opportunities to support young people and older people, people with disabilities and active volunteers. Some of the projects supported by the Board are set out below:

- Sukosta Theatre Company – workshops for the elderly
- Great Hinton Memorial Hall - defibrillator
- Bowerhill Village Hall – gas boiler
- Golden Fleece Cricket Club – new club pavilion
- Atworth Village – gateway system
- AFC Melksham – coaching days for young people
- Bowerhill Residents Action Group – picnic area
- Bowerhill Busy Bees Patchwork Group – new equipment
- Melksham – counseling services for children
- Melksham Council of Community Service – new bus engine
- Lowbourne Neighbourhood Centre - IT equipment
- Atworth Youth Club – camping equipment
- Keevil Parish Council - War memorial renovation
- Melksham and District Young Farmers Club – outdoor education trip
- Movement for the Mind project Alzheimers Support
- Poulshot Village Trust – restoration of Poulshot pond
- Seend Parish Council - War memorial renovation
- The Golden Fleece Cricket Club – new cricket field

- Wilts & Berks Canal Trust – towpath enhancements
- Shaw Village Hall – wheelchair access disabled toilet
- Beanacre Cricket Club - Cricket club roller
- Melksham Splitz Support Service - support group
- Melksham – CCTV
- Semington Village Hall - suspended ceiling in main hall
- Melksham – dog poo bag dispensers
- Melksham Adventure Centre - kitchen
- Melksham – Does Art project SPLASH
- Great Hinton Memorial Hall – purchase of defibrillator
- Melksham Community Area Partnership - Cycle Safety Scheme
- Bowerhill Village Hall – gas boiler

### **Participatory Budgeting**

Melksham have piloted a new method of allocating funds through Participatory Budgeting. A successful event was put together in 2011 where young people presented their projects asking for funding and then the groups and the Area Board decided who should get the funding. A second event took place in Melksham in November 2012, working in Partnership with Extended services, the “You Decide” event combined an awards ceremony - enabling young people to be rewarded for their awesome achievements, with the participatory budgeting - where young people and members of the community decided how funding would be allocated.

### **Campus**

The original proposal that was considered by the Melksham Area Board was to develop a campus facility on Council-owned land adjacent to the Melksham Oak school; however having consulted widely and listening to local people’s views the Area Board asked that Wiltshire Council consider any other sites in a more central location if local landowners come forward with options.

An advert was placed and Cooper Tires, who owned the Melksham House site, came forward and offered the site to the Council. Other sites also came forward but an appraisal of the sites identified that the Melksham House site met the requirements of the Campus project.

The Wiltshire campus programme is now well underway. The Melksham business case was agreed by Wiltshire Council’s Cabinet in December, funding having been allocated in the financial plan. The campus is being considered for the 13.9 acre Melksham House town centre site, purchased last September from Cooper Tires. The initial proposals for the campus included a commitment to provide the following facilities on the Melksham House Site;-

- Library with ICT facilities
- Youth centre facilities
- Swimming pool plus learner pool
- Sports hall, squash courts & fitness suite
- Multi activity rooms
- Indoor bowls
- Multipurpose training suite/meeting, office & resource rooms for use by the community, council, partners and others.

- Soft play area
- Café facilities.

The AreaBoard on 10<sup>th</sup> October considered the plans in detail and moved this exciting project forward

### **A year of celebration**

The Area Board threw its full support behind the Queens Diamond Jubilee celebrations, The Olympics and the Paralympics. A tent showcasing all of the great things that happen in the Area was on display in Salisbury Cathedral Close for the Queen's visit, an event that attracted over 25,000 people. The tent was the product of joint working with Melksham Community Area partnership and town and parish councils and displayed many exhibits. The Board also welcomed the [Olympic flame](#) to the area and supported Melksham Town and Parish Council's celebrations.



The Seend Shuttle

### **Transport and highways**

The Melksham Community Area Transport Group has been active during the last 2 years and has delivered many local highways projects, including: footway improvements, gateways and Community Speedwatch groups. The Community Area Transport Group is a new way of working together, where sticky issues are raised by people or groups in the community and relevant partners get together to resolve them in a new and creative way.

### **Working with partners**

The Area Boards has formed very strong links with Melksham Community Area Partnership (MCAP) and helped to support a major community survey that has helped to inform the new community plan for the area.

### **In summary**

Melksham Area Board has had a major impact in the local area and is well supported by the local community. It has worked hard to listen to the views of local people from all walks of life, supported local groups to do more for themselves and tackled some of the big issues facing the area. The Board continues to go from strength to strength.



Report to	Melksham Area Board
Date of Meeting	6 <sup>th</sup> February 2013
Title of Report	Community Funding

## Purpose of Report

To ask Councillors to consider three small grant applications, one councillor led initiative and two Community Area Grant applications.

### 1. Small grant applications

Bowerhill Toddler Group wish to apply for a grant of £350 to embrace different cultures.

Melksham Community Area Partnership, Community Safety group, wish to apply for a small grant of £286 to provide slow down stickers.

Atworth village hall committee wish to apply for a grant of £248 for specialised furniture for people with a disability

### 2. Councillor led initiative

Councillor Jon Hubbard seeks to support Queensway community with an event and seeks £500 towards that project

### 3 Community Area Grants

Wilts and Berks Canal Trust wish to apply for a grant to help restore the towpath. They request £2832.

Melksham Forest Community Centre wish to apply for a grant of £3841 to install sewer pumps in their community centre

## 1. Background

- 1.1. Area Boards have authority to approve Area Grants under powers delegated to them by the Deputy Leader and Cabinet member for Community Services (27 February 2010). Under the Scheme of Delegation Area Boards must adhere to the Area Board Grants Guidance for funding.
- 1.2. In accordance with the Scheme of Delegation, any recommendation of an Area Board that is contrary to the funding criteria would need the approval of the Leader, the appropriate Cabinet Member or the Cabinet.
- 1.3. In accordance with the Area Board Grants Guidance officers are required to provide recommendations in their report, however, the decision to support applications and to what level is made by Wiltshire Councillors on this Area Board.
- 1.4. Funding applications will be considered at every Area Board meeting.
- 1.5. Melksham Area Board has been allocated a 2012/2013 budget of £49,731 for community grants, community partnership core funding and councillor led initiatives. Following allocation at previous Area Boards, this leaves a total budget of £5,968 for the 2012/2013 budget.
- 1.6. A decision has been made in 2012/2013 that paper copies of funding applications will no longer appear as part of the agenda in an attempt to reduce volume of paper used. However, the application forms will be available on the Wiltshire Council web site and hard copies available upon request.
- 1.7. The 2012/2013 funding criteria and application forms are available on the council's website ([www.wiltshire.gov.uk/areaboards](http://www.wiltshire.gov.uk/areaboards)) or paper versions are available from the Community Area Manager.

<b>Background documents used in the preparation of this Report</b>	<ul style="list-style-type: none"><li>• Community Area Grant Application Pack 2012/13</li><li>• Melksham Community Area Plan</li></ul>
--	--

## 2. Main Considerations

- 2.1. Councillors will need to be satisfied that grants awarded in the 2012/13 year are made to projects that can realistically proceed within a year of the award being made.

- 2.2. There will be no further rounds of funding during 2012/13. Should funds be available, the next funding round begins in the new financial year .The next Area Board takes place on 5<sup>th</sup> June 2013

### **3. Environmental & Community Implications**

Community Area Grants will contribute to the continuance and/or improvement of cultural, social and community activity and wellbeing in the community area, the extent and specifics of which will be dependent upon the individual project.

### **4. Financial Implications**

- 4.1. Awards must fall within the Area Boards budget allocated to the Melksham Area Board.
- 4.2. If grants are awarded in line with officer recommendations, Melksham Area Board will have a balance of nil for Grants.

### **5. Legal Implications**

- 5.1. There are no specific Legal implications related to this report.

### **6. HR Implications**

- 6.1. There are no specific HR implications related to this report.

### **7. Equality and Inclusion Implications**

- 7.1. Community Area Grants give all local community and voluntary groups, an equal opportunity to receive funding towards community based projects and schemes.
- 7.2. Implications relating to individual grant applications are outlined within section 8 – “Officer Recommendations”.

## 8. Officer recommendations

Ref	Applicant	Project proposal	Funding requested
8.1	Bowerhill Toddler Group	A project to help toddlers and their families embrace different cultures	£350

8.1.1. The officer recommends this application is awarded

8.1.2. The application meets the criteria for small grants 2012/13

8.1.3. The application demonstrates a link to the Community Plan; Early intervention at preschool to break the cycle of deprivation and lack of educational attainment and increase parenting skills

8.1.4 Bowerhill Toddler Groups are a not- for- profit organisation.

8.1.5 The project addresses equality and inclusion issues, enabling toddlers and their families to raise their awareness of different cultures.

8.1.6 Should the Area Board make a decision not to fund the project the project will be delayed as further funding will need to be sought

Ref	Applicant	Project proposal	Funding requested
9	Melksham Community Area Partnership, Community Safety group.	Provide “slow down” stickers for residents wheely bins	£286

9.1.1. Officer recommends the application is awarded

9.1.2. The application meets the grant criteria 2012/13

9.1.3. The application demonstrates a link to the Community Plan with regard to road safety.

9.1.3. The application meets locally agreed/area board priorities

9.1.4. The applicant is a not for profit organisation.

9.1.5. The project will provide slow down stickers that will be seen by drivers on bin collection day. Drivers will repeatedly see notices as they pass by which remind them that speeding will not be tolerated..

9.1.6. If the Area Board makes a decision not to fund the project the project will need to find funding elsewhere.

Ref	Applicants	Project proposal	Funding requested
9.2.	Atworth village hall committee	To provide special furniture for people with a disability	£248

9.2.1. Officer recommends the application is awarded

9.2.2. The application meets the grant criteria 2012/13

9.2.3. The application demonstrates a link to the Community Plan: ensure inclusion of all and raise the community spirit.

9.2.3. The application meets locally agreed/area board priorities

9.2.4. The applicant is a not for profit organisation.

9.2.5. This project will provide suitable seating for people with a disability. Two special needs chairs will be provided to ensure all can access the activities within the village hall.

9.2.6. If the Area Board makes a decision not to fund the project the project will need to find more funds to progress

Ref	Applicants	Project proposal	Funding requested
9.3.	Councillor Led initiative by Councillor Jon Hubbard	Support Queensway community with an event - to celebrate the wealth of talents that exist in the community.	£500

9.3.1. This project will enable the community to get together and gather for an event to reduce fragmentation in the community

Ref	Applicants	Project proposal	Funding requested
9.4	Wilts and Berks Trust	Help restore the footpath	£2832 - £750 to create GPS Benchmarks New route survey of 1.6km £1785

9.4.1 The officer recommends this application is awarded in part – to the sum of £2535

9.4.2 The application meets the criteria for grants 2012/13

9.4.3 The application demonstrates a link to the Community Plan; protect and enhance parks and green spaces, provide dog walking area where dogs can be off lead maintain and promote Kennet and Avon canal, support the Melksham link and the restoration of the canal and Promote cycling. This part of the path was prioritised following a meeting with the Partnership and members of the community in July 2012

9.4.4. Wilts and Berks Canal Trust are a not- for- profit organisation.

9.4.5. The project addresses equality and inclusion issues and will provide equal access for all.

9.4.6. Should the Area Board make a decision not to fund the project the project will be delayed as further funding will need to be sought

9.4.7. The project will provide the first stage of a topographical study working towards a multi use path and a traffic free cycleway from Melksham to Lacock and wildflowers will be planted along the route.

Ref	Applicants	Project proposal	Funding requested
9.5	Melksham Forest community Centre	Install sewer pumps in their community centre	£3841

9.5.1 The officer recommends this application is awarded in part – to the sum of £2046

9.5.2 The application meets the criteria for grants 2012/13

9.5.3 The application demonstrates a link to the Community Plan; to remove barriers to participation in local sports or community activity for people on low incomes, and increase local volunteering.

9.6 Melksham Forest Community Centre is a not- for- profit organisation.

9.6.1 The project addresses equality and inclusion issues and will provide equal access for all.

9.6.2 Should the Area Board make a decision not to fund the project the project will be delayed as further funding will need to be sought

9.6.3 The project will provide the final stage of the project that has taken 18 years in

development and though the hall is nearly complete, this funding will complete the project providing a fully functional community space.

<b>Appendices:</b>	<b>Appendix x 6 - Grant applications from</b>  1 <u>Bowerhill Toddler Group</u>  2 <u>Melksham Community Area Partnership, Community Safety group.</u>  3 <u>Atworth village hall committee</u>  4 <u>Councillor Jon Hubbard</u>  5 <u>Wilts and Berks Trust</u>  6 <u>Forest Community Centre</u>
--------------------	--

No unpublished documents have been relied upon in the preparation of this report.

<b>Report Author</b>	Alison Sullivan, Community Area Manager Tel: 07917 721371 E-mail <a href="mailto:alison.sullivan@wiltshire.gov.uk">alison.sullivan@wiltshire.gov.uk</a>
----------------------	---





Report to	Melksham Area Board
Date of Meeting	6 <sup>th</sup> February 2013
Title of Report	Community Transport Group funding

## Agenda Item No 9

### 1.Purpose of Report

To request that Councillors agree to allocate from Community Area Transport Group Delegated budget:-

- Up to £2,000 for dropped kerbs.
- To allocate up to £500 for sockets on Woodrow Road to enable SID deployment.
- To allocate any remaining funds towards the high grip surface at Bank Street Melksham (carry over to 2013 / 14).

### 2.Implications of not making a decision

If the Area Board is unable to commit to the proposed projects the funds may be utilised in another area.

### 3.Recommendations

It is recommended that the Area Board agree that the delegated budget is used for the above purpose.

### 4. Background

Melksham Community Area Transport Group have been delegated £13,225 for expenditure on local Highways projects.

Melksham CATG expenditure 2012 / 13 as of 01/02/13  
Budget £13,225

Scheme	Expenditure	Projected Spend	CATG Commitment	Estimate
Melksham High Street Bollards	£2233.26 Final	£2233.26	£2,000	£2,993.12
Melksham Bank Street High Grip Surface	£0,000	£0,000.00	£0,000	Unknown
Whitley Top Lane Footway Phase 2	£10,000 Interim	£15,476.00	£7,500	£15,476
Atworth Gateways	£0,000	£6,000.00	£2,000	£6,000
Melksham Dropped Kerbs	£2,000.00	£2,000	Unknown	£0,000
Melksham Woodrow Rd Post Sockets for SIDs	£0,000	£500.00	£500	Unknown
<b>Totals</b>	<b>£12,233.26</b>	<b>£26,209.26 estimated</b>	<b>£14,000</b>	<b>£24,469.12</b>

Budget £13225.00  
Projected Spend £26,209.26  
Balance -£12984.26

Contributions

Melksham High Street Bollards	£744.42	Melksham Town Council
Whitley Top Lane Footway	£1,500.00	Melksham Without Parish Council
Whitley Top Lane Footway	£6476.00	Substantive Funding
Atworth Gateway	£2,000.00	Atworth Parish Council
Atworth Gateway	£2,000.00	Area Board (Cllr Griffiths contribution)
<b>Total</b>	<b>£12,720.42</b>	

Overall Balance -£263.84

Report Author: (Alison Sullivan – Community Area Manager)  
Tel No: 07917 721371, E-Mail: [alison.sullivan@wiltshire.gov.uk](mailto:alison.sullivan@wiltshire.gov.uk)

Appendix: Melksham Community Area Transport Group highway Priorities

**Melksham Area Board Highway Requests  
Schemes for Consideration (CATG May 2012)**

Street / Area Location	Town / Village	Scheme Description	Issue No.	Date submitted	Contact Details	Funding allocation	Current Position	Next Action	Target date for next steps
Request for village gateway, Atworth	Atworth	Atworth (Parish Council?) would like to see gates erected at the entrances to the village on the A365.	1984	08/03/12	Mark Griffiths	Typically, for each approach, a gateway feature will cost in the region of £2,500 to £3000 to supply and install. Other Parish Councils have managed to secure part-funding for these features through their CATGs and I propose this is raised at the next Melksham CATG meeting.	Public meeting taking place in Atworth on Fri 18 June to discuss other issues. Will close issue 1984 and ask Atworth to submit new specific requests after their meeting.	Area Board (6 June 2012) approved funding. Total cost of £6000. £2000 from CATG, £2000 from Atworth PC to be considered on 18 July 2012 and £2000 from Area Board (Cllr Griffiths). Site meeting took place with PC on 29 June 2012. Agreed position to work up design. Implementation due in Autumn 2012. Update CATG 17 Sept detailed design not yet completed parishcouncil have pledged £2,000 <b>Nov 12 detailed design underway</b>	02-Nov-12
Request for bollards on Melksham High St	Melksham	Issue is vans parking on the new pavement outside Avon Place in Melksham High Street.	2027	23/11/2011	Andrew Morgan, Resident	Prices from MS are £300 for installation of 9 bollards.	Town Council: Councillors welcomed the proposal to erect bollards (In keeping with the style of bollard used in the town) on Melksham High Street. Whilst the Town Council would be unable to contribute towards the funding of these bollards it was considered that, should they be erected, floral planters provided by the Town Council could be interspersed with the bollards to provide an attractive addition to the street scene. This arrangement would	Area Board (6 June 2012) approved funding. Total cost £3000. £2000 from CATG, £1000 from town council. Funding approved. Ordering and programming taking place. Installation by end of October 2012. Update CATG 17 Sept end of October planned implementation <b>15/10/2012 Installation is likely to take place within 3 months now complete</b>	02-Nov-12
Junction of Sandridge Road/Queensway.	Melksham	Pedestrian Crossing - on a school route	1415 and 1309	21/12/10	John Crook, Melksham TC and Yvonne Crook	Costs would be £3000 for advisory crossing and £5000 for school flashing signs.	Pedestrian count showed 100 crossed in 4 peak hours, leading to 25 per hour (minimum needed is 50) Recommendation is for advisory crossing (dropped kerbs, tactile, coloured surface, low level bollards) Could also have school flashing signs. Crossing patroller is in post atm.	This was not prioritised for funding for 2012/13 as crossing patroller is in place it was not felt to be a good use of public funding. <b>Keep on list and review next financial year.</b>	02-Nov-12
Application of a high grip surface to pavement, Bank St, Melksham	Melksham		2254	19/03/12	Mark Stansby	Estimated costs £10-12k	Town council is favour but unable to consider financial contribution until more accurate costs are provided.	Not prioritised for 2012/13 budget at the moment. Design and estimates to be prepared for 2013/14 budget.If it goes ahead it will be next year Feedback from Mark Stansby:- This has been identified by the CATG as a potential priority for 2013 / 14. <b>Designs and a cost estimate are to be prepared for consideration before the end of this financial year March 2013</b>	02-Jun-13
Dangerous overtaking between the Clock Tower, Atworth to beyond the Farm Shop, along the western A36 Cornwall Crescent Dropped kerbs					2531 and 2532 and 2709	Sep-12	Kenneth Spencer	Suggested Action;- Residents wish to have double-white lines from the region of the Clock Tower up to the bend by the Keeper's Cottage. This measure would dissuade all but the most recalcitrant drivers from dangerous and threatening overtaking on the hill as they enter and leave our village CATG REviewed 17 Sept Mark states that the area could be surveyed but not suitable for double white lines and the survey would cost the CATG £4080 to do, the shop sign should alleviate situation and the new gateway, review after this has been completed Cllr Jon Hubbard agreed to send more information, this <b>prioritised for £2,700 from CATG funds left at end of year 2013</b>	02-Jun-13

